

Follett Destiny® QuickScan

Quick Start Guide

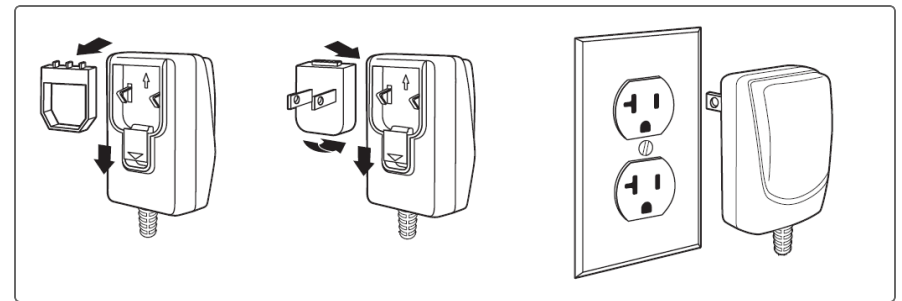


Wherever you are, the Follett Destiny QuickScan gives you real-time synchronization to your district's Destiny® Library Manager or Destiny® Resource Manager. With an intuitive, modern design, the QuickScan is easy to use, reducing your learning curve.

Get Started

Turn off your computer's power before connecting the scanner, then power up the computer once the scanner is fully connected. When the base is connected and powered up, put the scanner in the base to establish a link. The green LED on the base flashes to indicate the scanner's battery or charge pack is charging.

Power Supply Assembly



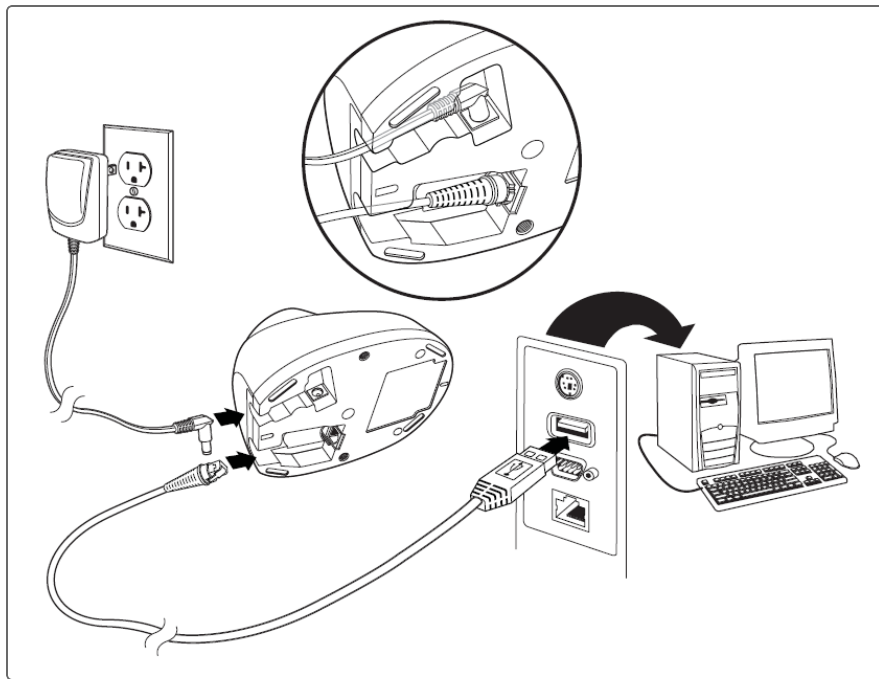
Power Supply

Follett Destiny® QuickScan

Connect Scanner

Use the diagram below to connect the scanner base unit to the power supply and the computer USB port.

1. Plug USB cable into computer.
2. Plug USB cable into base unit.
3. Plug power cord into base unit.
4. Plug power cord into electrical outlet.



Note: The QuickScan device charges with a USB cable to computer or via a general purpose USB wall charger. Charging with a USB wall charger is faster.

Read Techniques

The view finder projects an aiming beam that should be centered over the barcode, but it can be positioned in any direction for a good read.

Note: If the scanner beeps three times when scanning a barcode, the link has not been established. If the scanner beeps once, the link has been established.



Follett Destiny® QuickScan

Standard Product Defaults

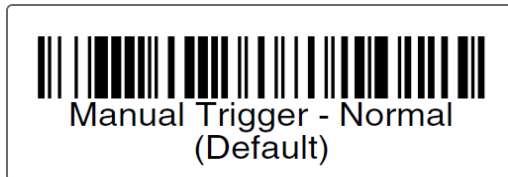
The following barcode resets all standard product default settings.



Enable the ScanHandle

The following barcodes will allow you to use the scanner in one of two modes.

- **Manual Scanhandle - Normal Mode** (Press the button on the scanhandle to read.)



- **Presentation Mode** (The scanner is activated when it detects a barcode.)



Note: Presentation Mode continuously draws power, so the use of an external power supply is recommended for this mode.

Stream Presentation

When in Streaming Presentation mode, the scanner leaves the scan illumination on all the time and continuously searches for barcodes.



Test Scanner

Test your scanner by using the following procedure:

1. On your workstation, launch a text editing program such as Simple Text or Notepad.
2. Scan the test barcode below.



3. Check to see if the number **12345** appears in the text editor. If the number does not appear, contact Follett Technical Support at 800.323.3397.

Follett Destiny® QuickScan

LED Indicators

The QuickScan and the base unit have both LED and audible indicators that provide the following information about their status.

QuickScan		
LED Indication	Audible	Status
Normal Operation		
Red flash	None	Low battery
Green flash	One beep	Successful scan
Red, blinking	Error tone	Failed scan
Menu Change		
Green flash	Two beeps	Successful change
Red, blinking	Error tone	Unsuccessful change

Base Unit	
LED Status	Cause
Red - Off	USB connection suspended
Red - On continuously	Power on, system idle
Red - Short blinks	Receiving data from scanner or host
Green - On continuously	Battery charged
Green - Rapid flash	Charging error
Green - Slow flash	Battery charging
Green - Off	Battery not detected, or charge suspended